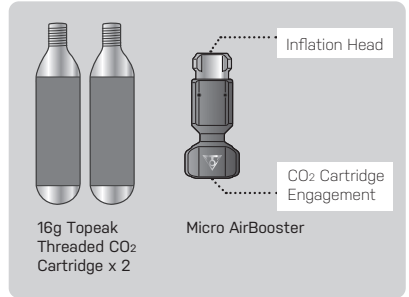


- Accepts all 16g threaded CO₂ cartridges.
- Recommended to use Topeak 16g threaded CO₂ cartridges.
- Please read all instructions before first use.
- Periodically check that components are still securely fastened to your bike.
- Compatible with Ninja Cage series.

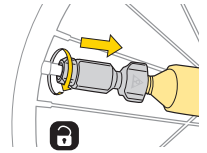


HOW TO USE MICRO AIRBOOSTER

Schrader Valve

- Thread-in CO₂ cartridge.
- Install and thread-in inflation head to Schrader valve.
- Start and regulate CO₂ flow by pushing inflation head onto valve stem.

NOTE



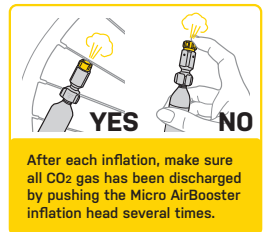
To avoid possible personal injury and damage to bike and/or tool, ensure to disengage CO₂ inflator properly after use by unthreading inflation head in correct direction.

Presta Valve

- Thread-in CO₂ cartridge.
- Loosen valve core before inflation.
- Start and regulate CO₂ flow by pushing inflation head onto valve stem.

WARNING

- If using the Micro AirBooster inflator continuously, make sure to wait 20 seconds in between cartridges for the rubber grommet inside the inflation head to return to its original position. Otherwise, a gas leak may occur and prevent proper inflation.
- Tighten the CO₂ cartridge before using CO₂ inflation function. Failure to do so will cause improper operation and may cause injury.
- DO NOT remove CO₂ cartridge if it is still charged with gas. Completely discharge the CO₂ cartridge before removal.
- When opening the CO₂ cartridge, point the inflator head away from yourself and others.
- DO NOT use Micro AirBooster inflator if any part is cracked or broken.
- DO NOT expose the CO₂ cartridge to heat, or store at temperatures above 120°F (49°C), or store in enclosed vehicles.
- Make sure to wear gloves when inflating to avoid injury.
- The barrel and CO₂ cartridge may become extremely cold/ frosty when the CO₂ gas is expelled.
- DO NOT try to unscrew the Micro AirBooster inflation head until it has warmed sufficiently to touch.
- Keep out of reach of children.





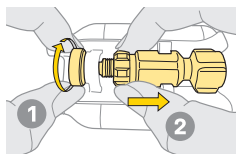
MICRO AIRBOOSTER

CO2 CARTRIDGE

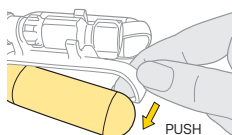
TIRE LEVER (NINJA CO2+)

PARTS REPLACEMENT

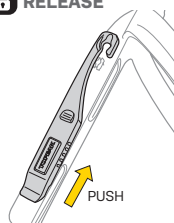
RELEASE



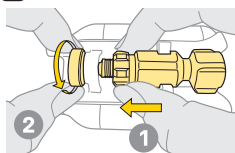
RELEASE



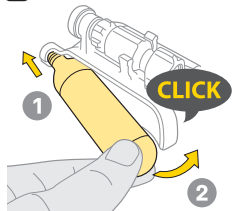
RELEASE



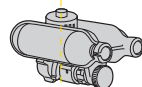
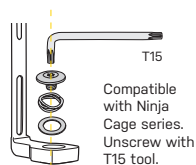
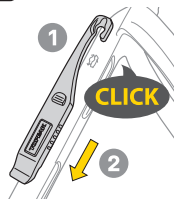
INSTALL



INSTALL



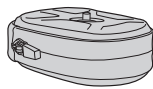
INSTALL



NINJA T ROAD
Art no. TNJ-TR

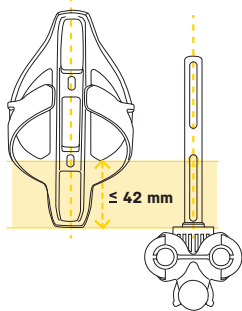


NINJA T MOUNTAIN
Art no. TNJ-TM



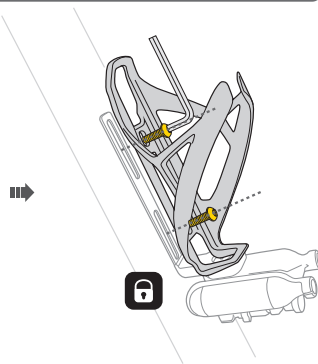
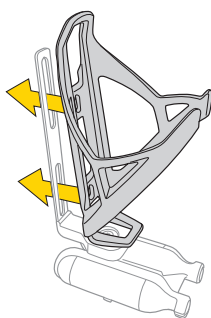
NINJA POUCH ROAD
Art no. TNJ-PR

HOW TO INSTALL ON BIKE WITH OTHER CAGE (NINJA CO2 only)



CAGE COMPATIBILITY

Ninja CO2 is only compatible with cages that have a distance of 42 mm or less between lower mounting bolt hole centerline and bottom of bottle cage



SPARE PARTS



16g Threaded CO2 cartridge
Art no. TCOT-2 (2 pcs)
TCOT-5 (5 pcs)



Tire Lever
Art no. TRK-T086



Micro AirBooster
Art no. TMB-1



O-ring Replacement Kit
Art no. TRK-HR01

The valve head o-ring is subject to wear and may cause air leakage over time. Periodically inspect and replace o-ring if needed.

WARRANTY

2-year Warranty: All mechanical components against manufacturer defects only.

Warranty Claim Requirements

To obtain warranty service, you must have your original sales receipt. Items returned without a sales receipt will assume that the warranty begins on the date of manufacture. All warranties will be void if the product is damaged due to user crash, abuse, system alteration, modification, or used in any way not intended as described in this manual.

* The specifications and design are subject to change without notice.

Please contact your Topeak dealer with any questions. For USA customer service, call: 1-800-250-3068 www.topeak.com